

GE
Lighting



IMMERSION™

LED Display Lighting

Refrigerated Vertical Cases
RV30 Series



GE imagination at work

Immersion™ LED Display Lighting from GE is continuing to change the way people look at refrigerated cases with the introduction of the new RV30 series.

- Storeowners will notice improved value, increased light intensity and significant reductions in energy consumption and maintenance costs.
- Merchandisers will be able to create the right look for their store with the availability of multiple colour temperatures and lengths to select from.
- Shoppers will benefit from reduced glare and improved product visibility, keeping focus on the food packages inside the case.

See for yourself why Immersion LED Refrigerated Display Lighting is *clearly a better choice!*™

Greater visual appeal

Brighter, more uniform look throughout the case area

Brilliant light and consistent uniformity help create a superior selling environment throughout the entire case area. Unlike fluorescent systems, Immersion keeps the light directed on the shelves, providing higher average lux levels and a more uniform light distribution across the package facings. The hidden light source and innovative optic design significantly reduces light spill and eliminates distracting glare, making aisles feel larger and more spacious.

Multiple colours, multiple lengths to create the right look

Our IMMERSION system was designed to be easily incorporated into new refrigerated cases or retrofitted into existing cases. We offer scaleable length (short, long, extra long) with dedicated center/left end/right end fixtures to fit all half-glass and full-glass doors. Also available in multiple colour temperature versions (3500, 4100 and 5000K), giving retailers the flexibility to create the right look for their stores.

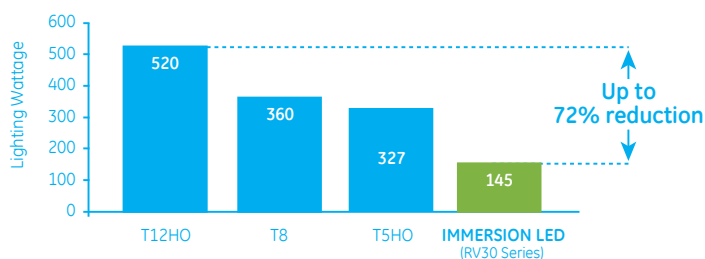
Increased energy savings

Lower wattage reduces electric bills

The RV30 series reduces energy consumption from case lighting by up to 72% compared to T12HO fluorescent. This system is also compatible with on/off motion sensors for even greater energy savings.

Lighting System Wattage

5-door case example
(Long light fixtures)

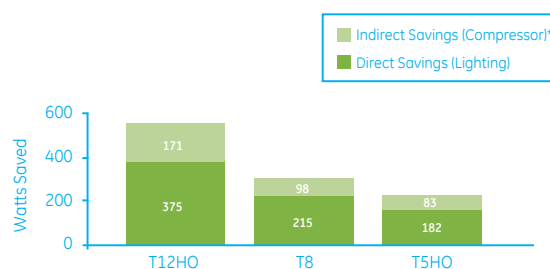


Additionally, for every watt of light reduced inside the refrigerated case, the compressor doesn't need to work as hard to remove the heat from inside.

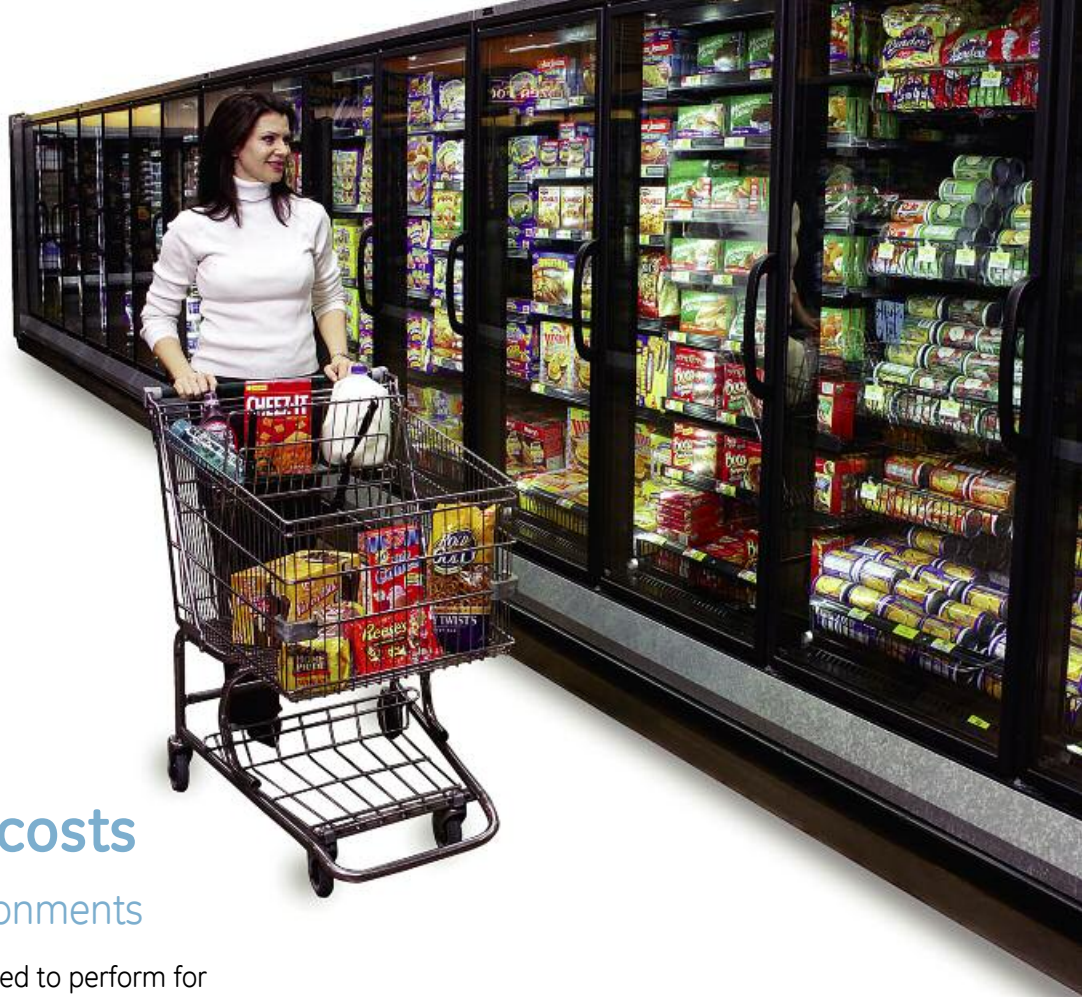
In the chart below, if you compare Immersion to T8 fluorescent, you could save 215 watts from running the lighting system and an additional 98 watts from reduced compressor work—for a total of 313 watts saved.

Immersion Wattage Savings

5-door case example
(Long light fixtures)



*Compressor savings are dependent on case temperature and design.



Reduced maintenance costs

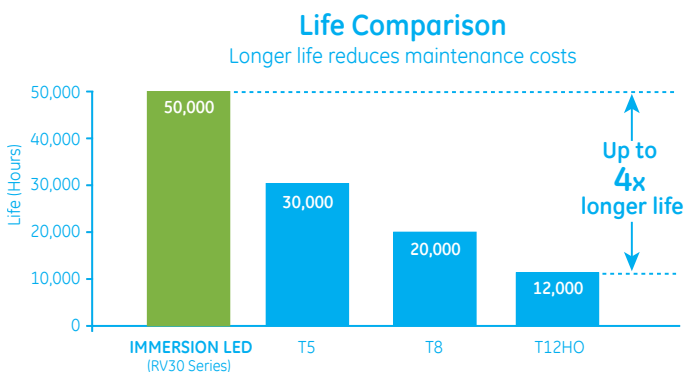
Long life in cold environments

Immersion's RV30 system is rated to perform for 50,000 hours—that's up to 4 times longer than fluorescent. Additionally, unlike fluorescent tubes, LEDs do not require time to warm up and experience no reduction of life from being turned on and off in cold environments. This superior performance and reliability is backed by a 5-year limited warranty.

Environmentally responsible

Reduce energy use, CO₂ emissions & material waste

Immersion can help retailers with initiatives to curb their environmental impact. Decreased energy usage significantly lowers CO₂ emissions, while long life reduces material waste. Additionally, this system is RoHS and NSF compliant, has no UV or infrared, and does not contain any mercury, lead or glass — making handling and disposal less of a concern.



5.7 years of continuous 24-hour operation saves on relamp costs

With RV30's impressive life and ongoing performance, relamping schedules of less than one year for standard fluorescent can be extended to more than 5.7 years of continuous 24-hour operation without changing a lamp—and it could be more. This significantly reduces material and labor expenses, as well as the hassle and disposal costs associated with fluorescent lamp replacement.

Lower CO₂ emissions

If a retailer replaces T8 fluorescent lamps with Immersion RV30 LED light fixtures in 100 refrigerated case doors in each of its 100 stores, the reduction in energy usage could save over 548,000€ and reduce CO₂ emissions by over 2,019 metric tons annually.* That's equal to planting over 545 acres of trees each year!



*Assumes Long light fixtures installed in 5-door cases with 24/7 operation at a cost of €0,10/kwh.

	Product Code (Single)	Product Code (10-Pack)	Description	Item	PERFORMANCE DATA					DIMENSIONAL DATA			
					Colour Temp (K)*	Illuminance (Lux)**	Life (Hours)	CRI (Typical)	Energy (Watts)	Length (L)	Width (W)	Depth (D)	
SHORT LED	75955	75958	GE-LT303050CTR	Short LED Light -Center	5000	1500	50,000	70	12	(mm)	693.4	84	28
	75956	75959	GE-LT303050EDL	Short LED Light -Left End	5000	1500	50,000	70	7	(mm)	696	58	30
	75957	75960	GE-LT303050EDR	Short LED Light -Right End	5000	1500	50,000	70	7	(mm)	696	58	30
	75961	75968	GE-LT303041CTR	Short LED Light -Center	4100	1350	50,000	70	12	(mm)	693.4	84	28
	75962	75969	GE-LT303041EDL	Short LED Light -Left End	4100	1350	50,000	70	7	(mm)	696	58	30
	75967	75970	GE-LT303041EDR	Short LED Light -Right End	4100	1350	50,000	70	7	(mm)	696	58	30
	LONG LED	78633	78914	GE-LT306050CTR	Long LED Light -Center	5000	1150	50,000	70	29	(mm)	1463	84
78634		78915	GE-LT306050EDL	Long LED Light -Left End	5000	1150	50,000	70	14.5	(mm)	1466	58	30
78913		78916	GE-LT306050EDR	Long LED Light -Right End	5000	1150	50,000	70	14.5	(mm)	1466	58	30
78917		78920	GE-LT306041CTR	Long LED Light -Center	4100	1100	50,000	70	29	(mm)	1463	84	28
78918		78921	GE-LT306041EDL	Long LED Light -Left End	4100	1100	50,000	70	14.5	(mm)	1466	58	30
78919		78922	GE-LT306041EDR	Long LED Light -Right End	4100	1100	50,000	70	14.5	(mm)	1466	58	30
78923		78926	GE-LT306035CTR	Long LED Light -Center	3500	1050	50,000	70	29	(mm)	1463	84	28
78924		78927	GE-LT306035EDL	Long LED Light -Left End	3500	1050	50,000	70	14.5	(mm)	1466	58	30
78925		78928	GE-LT306035EDR	Long LED Light -Right End	3500	1050	50,000	70	14.5	(mm)	1466	58	30
EXTRA LONG LED		78966	78969	GE-LT307050CTR	X-long LED Light -Center	5000	1150	50,000	70	34	(mm)	1727	84
	78967	78970	GE-LT307050EDL	X-long LED Light -Left End	5000	1150	50,000	70	17	(mm)	1730	58	30
	78968	78671	GE-LT307050EDR	X-long LED Light -Right End	5000	1150	50,000	70	17	(mm)	1730	58	30
	78972	78975	GE-LT307041CTR	X-long LED Light -Center	4100	1100	50,000	70	34	(mm)	1727	84	28
	78973	78976	GE-LT307041EDL	X-long LED Light -Left End	4100	1100	50,000	70	17	(mm)	1730	58	30
	78974	78977	GE-LT307041EDR	X-long LED Light -Right End	4100	1100	50,000	70	17	(mm)	1730	58	30
	78978	78981	GE-LT307035CTR	X-long LED Light -Center	3500	1050	50,000	70	34	(mm)	1727	84	28
	78979	78982	GE-LT307035EDL	X-long LED Light -Left End	3500	1050	50,000	70	17	(mm)	1730	58	30
	78980	78983	GE-LT307035EDR	X-long LED Light -Right End	3500	1050	50,000	70	17	(mm)	1730	58	30

*Colour temp (CCT) +/- 10%

**Initial illuminance (lux) +/-15% based on typical in-store performance. Short fixtures measured at 76 mm throw; Long and X-long fixtures measured at 152 mm throw.

Accessories

Product Code	Description	Item	DIMENSIONAL DATA			
			Length	Width	Depth	
78348	GE-PS1700NCMUL-SY	LED driver for Long and X-long lights	(mm)	307	43	30
74915	GE080/G/V24T1-A	LED driver for Short lights	(mm)	241	43	30
75974	GE-CV-LT3060CTR	Universal Wire Cover - Center and End	(mm)	41	33	25
75971	GE-MC-LT3060CTR	Universal Mounting Clip - Center	(mm)	23	30	27
75972	GE-MC-LT3060ED1	Universal Mounting Clip - End #1	(mm)	23	25	25
75973	GE-MC-LT3060ED2	Universal Mounting Clip - End #2	(mm)	23	25	25

Conforms to the following standards:



This device complies with Part 15 of the FCC Rules. Operation is subject to the following two conditions: (1) this device may not cause harmful interference, and (2) this device must accept any interference received, including interference that may cause undesired operation.

This Class [A] RFLD complies with the Canadian standard ICES-005. Ce DEFR de la classe [A] est conforme à la NMB-005 du Canada.