

## Underground Service

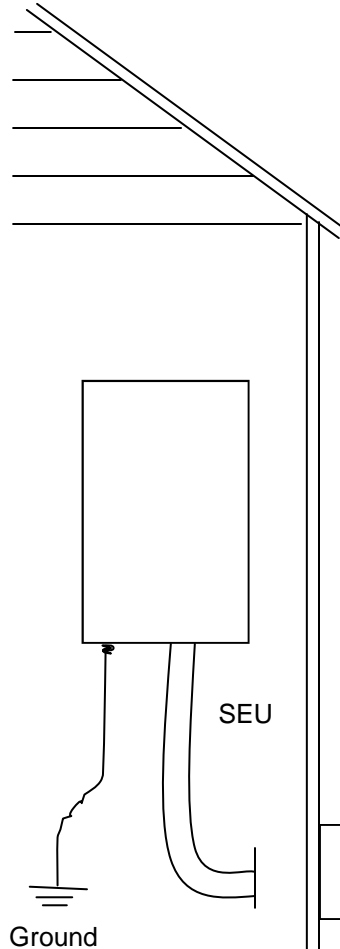
Today's Date _____/_____/_____	Delivery Request <input type="checkbox"/>	Pick Up Request <input type="checkbox"/>
Customer Name _____	Delivery Date _____/_____/_____	Pick Up Date _____/_____/_____
Phone Number (s) _____	Cell _____	Job Name _____
Dunn Sales Contact _____	Account # _____	Job # _____

<b>Cable</b>		
100A #2 SEU _____	Ft.	
100A #2 URD _____	Ft.	
100A #2-4 Trailer Wire SEU _____	Ft.	
150A #2/0 SEU _____	Ft.	
150A #2/0 URD _____	Ft.	
200A #4/0 SEU _____	Ft.	
200A #4/0 URD _____	Ft.	

<b>Grounding</b>		
#4 Stranded Bare Copper Wire _____	Ft.	
Ground Rod Galv. GR6258 _____	Qty.	
Ground Rod Copper 6258 _____	Qty.	
Ground Rod Clamp G5 _____	Qty.	
Waterpipe Clamp 90627 _____	Qty.	
Ground Bridge GB5 _____	Qty.	

<b>Exterior Product List</b>		
PVC Sch 80 Cond _____	Size _____	Qty. _____
PVC Sch 40 Cond _____	Size _____	Qty. _____
PVC Couplings _____	Size _____	Qty. _____
PVC Elbows _____	Size _____	Qty. _____
PVC Expan. Coup _____	Size _____	Qty. _____
Galv. Conduit _____	Size _____	Qty. _____
Galv. Elbows _____	Size _____	Qty. _____
LB Condulet w/c&g _____	Size _____	Qty. _____
Ground Bushing _____	Size _____	Qty. _____
Term Adpt, locknuts & bushings _____		Qty. _____

<b>Load Centers</b>		
100 A HOM20M100C _____	S _____	F _____
100 A QO120M100 w/ cover _____		
150 A HOM30M150C _____	S _____	F _____
150 A QO130M150 w/ cover _____		
200 A HOM40M200C _____	S _____	F _____
200 A QO140M200 w/ cover _____		

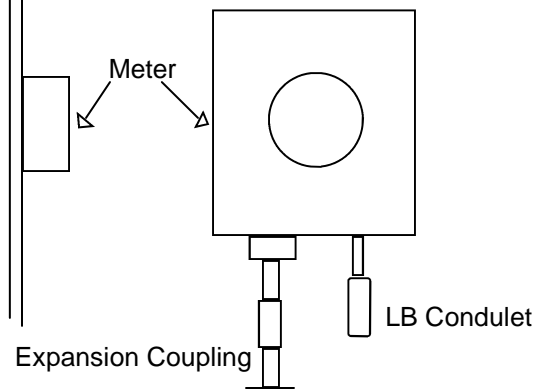


<b>Meter Trim</b>		
100 A _____		Qty. _____
150 A _____		Qty. _____
200 A _____		Qty. _____

<b>SEU Connectors (non-weatherproof)</b>		
100 A Service 1 1/4" L106 _____		Qty. _____
150 A Service 1 1/2" L107 _____		Qty. _____
200 A Service 2" L108 _____		Qty. _____

<b>Service Entrance (plastic) Bushings</b>		
100 A Service CPB125 _____		Qty. _____
150 A Service CPB150 _____		Qty. _____
200 A Service CPB200 _____		Qty. _____

<b>Miscellaneous Products</b>		
Deox 99904 _____	Tube (s)	
Duct Seal 1901 _____	Pound (s)	



<b>Breakers</b>			
_____ Poles	_____ Amps	_____ Qty.	
_____ Poles	_____ Amps	_____ Qty.	
_____ Poles	_____ Amps	_____ Qty.	
_____ Poles	_____ Amps	_____ Qty.	
_____ Poles	_____ Amps	_____ Qty.	